




bo.ho
green make-up

TRAINING BOOK

TECHNICAL TRAINING & MAKE-UP BOOK



SUMMARY



I/ EQUIPMENT.....	p4
II/ ACCESSORIES.....	p6
III/ STORAGE.....	p10
IV/ COMPLEXION.....	p12
VI/ EYES.....	p28
VII/ LIPS.....	p42
VIII/ NAILS.....	p47





EQUIPMENT



Professional or amateur, Boho Green Make-Up recommends you to use the following products, in order to run your animations and make-up the best way.



Moistoring organic face cream



Organic cleansing micellar water or organic vegetable oil



Hydroalcoholic gel



Tweezers



Mirror



Tissue



cotton buds



Removing cotton (Preferably washable)



Your Boho Green Make-Up brushes kit



ACCESSORIES



THE B. KIT



B. Kit Composition

- 6 Brushed
- 100% Synthetic hair
- FSC certified birch wood handle
- Made in France
- Comfort and easy for application
- Ergonomic handle
- Vegan



How to clean your brushes ?

It is important to wash your brushes at least once a month or every two months maximum. Between each wash, apply a disinfectant and scrub them on a clean tissue to remove excess material.

To wash used brushes, it is possible to use a soft shampoo or a baby shampoo. Place a little material in the palm of your hand or in a bowl and turn the head of your brush until it is soaked. Rinse thoroughly, do not immerse it completely in water as the hairs may peel off.

Squeeze the brush head in a clean towel and dry it flat.

FACE BRUSHES



Foundation brush

This brush applies the perfect amount of foundation on the face for a homogeneous and natural result.



Terra cotta / Blush brush

Its beveled shape closely follows the relief of your cheekbones and the hollow of your cheeks. It deposits ideal amount of pigments for the wanted result. By turning it over, the whole surface is used, wider, to blend the blush with a gesture and avoid any demarcation. By using the narrower part, it is perfect for contouring fan, achievable with Boho Green Make-up terra cotta. Its synthetic hair are ultra soft and resistant, even for the most sensitive skin.



Powder brush

The powder brush shape follows the curves, offering uniform application of compact powders, from the face inside to the face outside, in order from the face to the neck. To obtain a natural and uniform coverage with the loose powder, it is sufficient to collect the material, to tap your brush on the cap to avoid too much product, then to perform circular movements on the face and the neck, to avoid the demarcations. In addition, its synthetic hair are very soft and resistant, even for the most sensitive skins.



EYES BRUSHES



Eye shadows brush

Versatile, the eye brush makes it easy to apply eye shadows on the moving eyelid and the eyebrow.



Crease shadow brush

The conical shape of the brush is perfect to manipulate it in the eyelid's hollow, making small circular movements. This brush is the essential for gradient, to work the smoky eyes effect, melting the colors one to the other for a natural result. Its furnished, long hair are the key to eliminating the demarcation line between different shades of eye shadows. Its synthetic hair are very soft and resistant, even for the most sensitive skin.



Angled liner brush

The angled liner brush shape is ideal for drawing precise lines and intensify the look by underlining the lower or upper lash line. Slightly wet, the angled liner brush allows also to take your eye shadow to highlight the pigments and sparkles for a much more intense result. It can also be used to enhance the eyebrows color with eye shadows.





PRESERVATION



HOW TO PRESERVE PRODUCTS ?



It is important to make a regular inventory of your kits and drawers. Throw broken products, or packaging without lids away. It is also essential to check dates after openings noted on product to avoid allergies or reactions.

Here is a summary table of PAO (period after opening) for Boho Green Make-up products :

PRODUCT	PAO
Velvety foundation	12 month
Compact foundation	12 month
Concealer	12 month
Loose powder	12 month
Compact powder	12 month
Terra cotta	12 month
Blush	12 month
Eye shadows	12 month
Green liner	6 month
Precision Mascara	6 month
Volume & green Mascara	6 month
Pencil	From 12 to 18 month
Eyebrows pencil	From 12 to 18 month
Lipstick	12 month
Nail polish	24 month



COMPLEXION



COMPLEXION PRODUCTS



Green mineral / loose powder

Light texture
Unifies the whole complexion
Application with Powder Brush
Velvety finish
3 shades



Compact powder

Fix and matify complexion
Unified complexion
Silky and natural finish
4 shades



Compact foundation

Creamy texture
Excellent coverage
Foundation Brush or finger application
4 shades



Blush

Good healthy effect
Strong pigmentation
Long lasting
4 shades



Terra cotta

Baked
Fine texture
Structure the face
3 shades of pearl
3 shades of mat



Velvety foundation

Powder finish
Unctuous texture
Perfect coverage
Can be applied with fingers,
foundation brush or sponge
5 shades



Concealer

Light touch
Light texture
4 shades
1 green concealer anti-redness

VELVETY FOUNDATION

20% certified organic ingredients
99% natural ingredients



QUESTIONS

EXPLANATIONS

COMMENT

WHICH COLOR ?

The one that perfectly matches your skin tone with.

To choose your shade, draw a line from the cheekbones to the jaw and blend it with your finger.

If the color is good, it should not be distinguished from the skin.

APPLICATION ?

Step 1: Place a dab of organic velvety foundation on the back of your hand.

Step 2: Heat the material with the foundation brush in order to make it softer.

Step 3: Stretch the foundation with a foundation brush and apply it by areas. It will be necessary to repeat the operation several times to cover the whole face, always in the same way. Indeed, this foundation does not work as a BB cream or a very fluid foundation.

Step 4: We always recommend the application of a loose powder (green mineral) or compact powder after the application of a foundation to unify the complexion and fix it all day long.

WHO CAN USE IT ?

For normal and mixed to oily skins.

.Tips : If the foundation is too thick, do not hesitate to mix it with an organic moisturizing face cream.

COMPACT FOUNDATION

43,05% certified organic ingredients
99,99% natural ingredients



QUESTIONS

EXPLANATIONS

COMMENT

WHICH COLOR ?

The one that perfectly matches your skin tone with.

To choose your shade, draw a line from the cheekbones to the jaw and blend it with your finger.
If the color is good, it should not be distinguished on the skin.

APPLICATION ?

Step 1: Heat the material with the foundation brush in order to make it softer.

Step 2: Apply the foundation by area by stretching the material with your brush. The foundation applies to the hair root and the neck.

Step 3: We always recommend the application of a loose powder (green mineral) or compact powder after the application of a foundation to unify the complexion and fix it all day long.

WHO CAN USE IT ?

For normal and dry skins.

Its texture is made for a medium and natural coverage.

CONCEALER

25% certified organic ingredients
100% natural ingredients



QUESTIONS

EXPLANATIONS

COMMENT

WHICH COLOR ?

The one that perfectly matches your skin tone with.

Tips : A lighter tone for a stunning effect.

PRODUCT ?

Unifies dark circles and reduces fine lines, clears small vessels along the nose wings, clears the eye in the inner corner or eyebrows. In addition, it unifies the complexion by blurring imperfections and face shadows.

Tips : To hide a red spot, apply your concealer on it, taking care not to overflow it. Gently tap the red spot to melt the material. Do not forget to powder it in order to fix the correction.

APPLICATION ?

On a clean face, start by applying the concealer on the inner corner of the eye. Then underline the lower line lash, the dark eye area.
By small touches, you tap with the fingers tips to melt the material and come to unify & matify with a loose or compact powder of similar shade.

The must : Use the green concealer to hide redness !
Then apply your usual foundation over it.

TO REMEMBER: the concealer highlight the look, bring the reliefs out and hide imperfections.

LOOSE MINERAL POWDER

10% certified organic ingredients
99% natural ingredients



QUESTIONS

EXPLANATIONS

COMMENT

WHICH COLOR ?

Like the foundation, choose the one that perfectly matches the tone of your skin.

A powder with a base of yellow will give a radiance effect to your face.

PRODUCT ?

The ideal solution for the most sensitive skin to make-up.
GREEN MINERAL powder offers an ultra-natural finish while letting the skin breathe. It unifies and fixes the foundation, while making the skin bright and attenuating the signs of tiredness.

For a uniform and radiance finish.

WHO CAN USE IT ?

For all skins types, ideal for mixed to oily skin because of its thick texture.

Tips : To avoid the mask effect, think of delicately blending to the neck, hairline and ears.

APPLICATION ?

Step 1: Put some powder into the cap lid.

Step 2: Soak the powder brush BOHO GREEN MAKE-UP with material.

Step 3: Tap your brush to remove excess material.

Step 4: Apply the powder by making circular movements across the face, up to the neck.

COMPACT POWDER



*10% certified organic ingredients
99% natural ingredients*

QUESTIONS	EXPLANATION	COMMENT
WHICH COLOR ?	Use the same shade chosen for your foundation and closest to your complexion.	
PRODUCT ?	An ideal complement to the foundation, the compact powder unifies and sublimates the complexion, it allows to make localized adjustment. Micronized and slightly creamy, this powder fixes, matifies and unifies the complexion with its high covering power. Offers a silky, natural and velvety finish.	The compact powder is perfect to make adjustment and to transport it everywhere. It allows also to use less product.
WHO CAN USE IT ?	Ideal for normal and mixed to dry skins.	Perfect for a very natural look.
APPLICATION ?	Apply after the foundation and concealer but before the blush and terracotta. To do it, use the Bohio Green Make-up powder brush. Use a thinner brush (eg a crease shadow brush) to powder the eye area.	You can use a lighter powder tone than your usual shade, to powder dark circles and the T-zone and give radiance and relief to your face.

TERRA COTTA

10% certified organic ingredients
99% natural ingredients



QUESTIONS	EXPLANATION	COMMENT
WHICH COLOR ?	For clear skins, it is necessary to choose a tone in the shades of beige. For those who have matter skin, simply opt for a darker shades. Run a test on your jaw.	Tips : Before applying your terra cotta, be sure to hydrate your skin and unify your complexion with the foundation of your choice. The result will be perfect.
PRODUCT ?	Baked, the well-named and renowned Terra Cotta offers to sublimate your complexion with a fine texture in order to structure your face.	The perfect product for a natural tanned effect! Opt for lighter and darker shades for perfect contouring.
APPLICATION ?	The secret of the terracotta is to apply it on the right areas of the face. In any case, it must not spread over the entire face (especially for the pearly one). But be careful, each one must apply it according to its morphology (see tutorial p.20).	Tips : For a stunning effect, discreetly, place your pearly terra cotta on the edge of your nose and the top of your cheekbones (bone part) using a clean blush brush. Guaranteed effect!

TERRA COTTA TUTORIAL



LONG FACE



Cut the face into two parts and create a perpendicular line.
Apply the terra cotta according to the diagram to create shadows.
Healthy-glow effect assured.



SQUARE FACE



Aim the most angular extremities like the jaws, the two points of a square chin, the sides of the forehead or above the eyebrows if the eyebrow is very prominent.



TERRA COTTA TUTORIAL



ROUND FACE



Create a false hollow with the terra cotta under the cheekbone's bone, which can be delimited by making a big O with the mouth while pushing the chin down. The hollow will also be diagonal in shape, but it will continue down to create a wide V lying and filled. One can also, if the forehead is clear, shade slightly the sides of the forehead to leave light in the center.



CONTOURING TECHNIQUE



Step 1 :

Apply a darker terra cotta than your usual shade, on dark areas (brown areas on the drawing) to dig and sculpt your face.

Step 2 :

Apply a lighter pearly terra cotta than your usual shade, on the white areas (white areas on the diagrams) for a bright and radiant complexion.

HIGHLIGHTER TUTORIAL



Step 1 :

Take your matt terra cotta and brush powder.

Step 2 :

Draw a 3 with your brush passing over your forehead, your cheeks and your jaw. You can also dig your cheeks using a darker terra cotta under the cheekbone.

Step 3 :

Then take your pearly terra cotta with the blush brush.

Step 4 :

Place your terra cotta on the top of your cheekbones and on the edges of your nose, chins and jaws.

BLUSH



10% certified organic ingredients
99% natural ingredients

QUESTIONS	EXPLANATION	COMMENT
WHICH COLOR ?	<p>Choose a suitable texture for your skin tone. For a natural make up, choose a shade close to the red of your cheeks.</p> <p>The right color to choose is the one that will make you bright, while remaining quite discreet.</p>	<p>Tips : Do not hesitate to mix the colors to have a personalized shade that can marry at best with your complexion.</p> <p><i>You can use all the blushes in the Boho Green Make-Up range, but play with intensities if a hue is too dark or too bright for you.</i></p>
PRODUCT ?	<p>It is the most used healthy-glow effect product. It improves the make-up, a inescapable step. To work according to the shape of the face (see tutorial on page 25). The BLUSH offers 4 trendy shades. Play with their intensity!</p>	<p>If the face is dull and shineless, gently apply the blush on the forehead, chin and cheeks and on the tip of the nose to give a radiance effect.</p>
APPLICATION ?	<p>Step 1: Smile and apply your blush on the curved part of your cheekbones.</p> <p>Step 2: Soften the contours by stretching the powder towards the root of the hair and descending a little.</p> <p>Step 3: Observe the result and if pigments are too strong, blend it with a powder or brush.</p>	

BLUSH TUTORIAL



ROUND AND OVAL FACE



The round face has no protruding parts. Therefore it requires to be lengthened and sculpted.

To highlight your cheekbones, apply the blush by drawing a «3» on your cheeks, starting at the temples, going down and blending to the jaw.

Tip: Avoid pearly shades that reflect light and give volume.



SQUARE AND ANGULOUS FACES

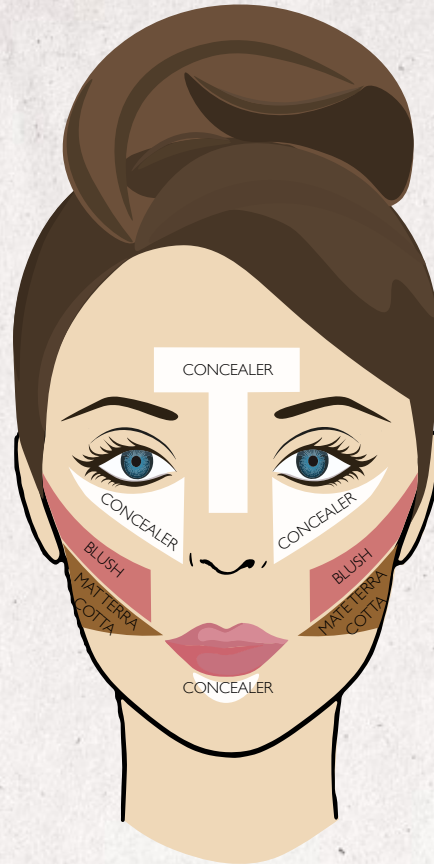


To lengthen the square face and soften the corners, apply the blush with circular movements. Feel free to highlight the cheekbones.

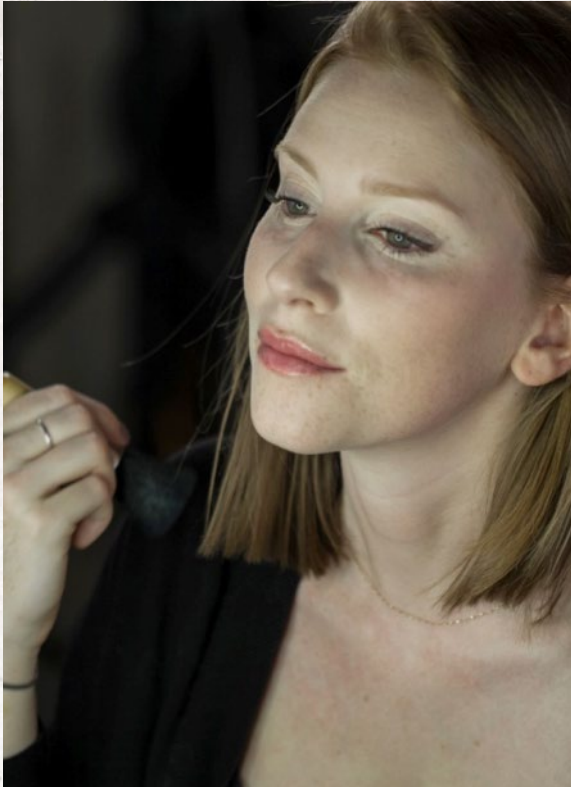
To soften the angular faces, apply the blush with a horizontal line. Go from the ear up to the protruding part of your cheeks.

Tip: Do not hesitate to smile in front of your mirror to see the bulging parts of your cheeks, which you can apply the blush on.

TUTORIAL FACE STRUCTURING



STEP TO STRUCTURE YOUR FACE



Step 1 :

Use your usual day cream.

Step 2 :

Apply your foundation to the entire face using the foundation brush.

Step 3 :

Put concealer on the dark circles and dark areas of your face = Zone T.

Step 4 :

Powder your face with your loose or compact powder using powder brush.

Step 5 :

Structure your face with a matte terra cotta tone darker than your skin tone and illuminate it with a pearly terra cotta and the blush brush.

Step 6 :

Apply the blush to the protruding parts of the cheekbones using the blush brush.



EYES



EYES PRODUCTS



Eyes & Lips pencil

Enriched with repair actives
Excellent precision
Creamy texture
Long lasting
8 colors available



Eyebrows pencil

Brows comb
Natural effect
3 colors available



Gypsy Palette

Perfect pigmentation
Longue lasting
Pearly and matt
Refillable palette
8 shades available



Mascara Volume & Green

Natural volumizing mascara
Ecological
Extends the eyelashes
Protects eyelashes
Black



Precision Mascara

Eyelash sheath
Natural eyelash effect
Small practical format
3 colors available



Eye shadows

Excellent pigmentation
Long lasting
Matte and pearly
24 shades available



Eye liner

Fine felt tip
Easy to apply
Solventless water base
3 colors available

EYEBROWS PENCIL



10% certified organic ingredients
100% natural ingredients

QUESTIONS

EXPLANATION

COMMENT

WHICH COLOR ?

Choose your shade according to the color of your hair and your natural shade, never choose a darker shade.

Blond Hair: Blond.
Chestnut hair: Châtain.
Hair dark brown: Châtain to Brun.
Black hair: Brun.

PRODUCT ?

It allows to densify, to fill the visible holes and to lengthen the eyebrows too shaved.

Use a pencil sharpener dedicated to makeup for hygiene reasons and convenience.

3 shades designed for brown, blond and chestnut hair.

*Your eyebrows are very important to the balance of your face, they structure and frame your eyes.
Do not hesitate to consult a professional to define the right shape.
Once the eyebrows are drawn, make up will be much easier.*

EYEBROWS TUTORIAL



Step 1 :

Structure your eyebrows with tweezers.

Step 2 :

Using the brows comb, brush your eyebrows upwards to redefine them.

Step 3 :

Always with the brows comb, brush your eyebrows outwards to discipline them.

Step 4 :

Redefin your eyebrows with the pencil and the shade of your choice by filling the areas without eyebrows.

Step 5 :

Brush your eyebrows outward using the brows comb to remove excess and blend for natural rendering.

Tips : If your eyebrows are long and unruly, you can trim them with small scissors.

EYE SHADOWS

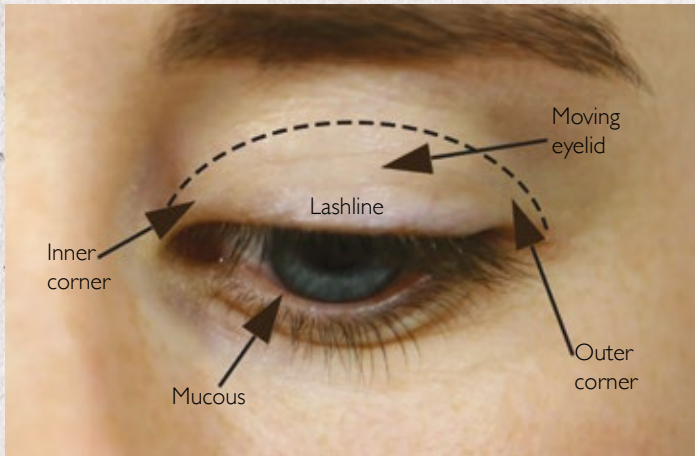


Balancing your eye



To avoid unbalanced make-up, place the brush between the wing of the nose and the outer corner of the eye. The line that appears corresponds to the balance of your face. This line must be followed to make-up on.

HOW TO APPLY EYE SHADOWS ?



Step 1 :

With the eye shadow brush, place the clear eye shadow on the moving eyelid, insisting on the inner corner of the eye to bring light and under the eyebrow to get a nice arched arch.

Step 2 :

Put the dark shadow on the outer eye corner and gradually degrade it towards the middle of the moving eyelid using the blush brush.

Step 3 :

Work the «banana», ie the eye hollow, making small back and forth with a eye shadow and a small amount of dark eye shadow.

Step 4 :

Accentuate your eye linelashes by depositing a little amount of dark eye shadow using the angled liner brush or eye pencil.

EXAMPLES OF EYE COLOR SHADES



Tips : If you have redness or purple tones around the eyes, avoid eye shadows that contain red tones which could make you look tired. Concentrate on nude and neutral tones, which do not contain red pigments (pay attention on grays and browns tones).

THE GYPSY PALETTE

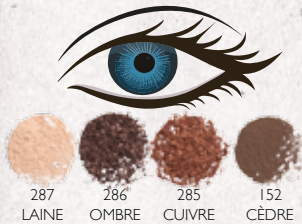


10% certified organic ingredients
99% natural ingredients



The **Gypsy Palette** is a PEFC[®] certified refillable wooden pallet. Composed of 8 matt and pearly shades, it awarded in June 2015 by the Cosmetic Excellence COSMEBIO Trophy. This trophy is awarded after the examination of a previously completed file, meeting stricts and innovatives requirements. After a pre-selection, the product was tested on a panel of organic consumers or not.

Its nude shades are trendy and adapted to each iris.
Copper for blue eyes, purple for green eyes, pink for brown eyes .. It is possible to make natural or intense make-up, according to your desires!



COMPLEMENTARY COLORS



The complementary colors are colors very distant and even diametrically opposite in the chromatic circle. They allow extraordinary contrasts and highlights that no other harmony could equal.

1. Under the light effect, any color applied on a support, projects into its surroundings its own complement.
2. Two complementary colors juxtaposed reinforce each other: For example, if you place a carmine near a linden green, carmine will project a lime green reflection that will strengthen the green base.
3. When two complementary colors are mixed or overlapped, they neutralize each other. That's why the Green Corrector is the perfect tool to neutralize your redness!



To understand how complementary colors work, choose a color from the diagram on the left. Its complement is always at the opposite side, in the chromatic circle.

Example : The complementary color of yellow is purple. The complementary color of blue is orange. If you take a look on the ends of the circle, you will find more nuances. The schema always works the same way.

This is why blue eyes are sublimated when they are made up with orange and coppery blushes (use the 208 Carotte for example). For green eyes, all shades of plum and purple (215 Prune or 217 Amethyste) will be used.

EYES PENCIL



23% certified organic ingredients
100% natural ingredients

QUESTIONS

EXPLANATION

COMMENT

PRODUCT ?

The pencil is ideal for a stretched and enlarged look.

Use a pencil sharpener dedicated to make-up for hygiene reasons and convenience.

Ideally after eye shadow !

APPLICATION ?

On the lower eyelid, draw a thin line on the linelashes and flare it towards the outer corner to make up the top trace. This will flesh out your line of eyelashes. Do not hesitate to blend your line with finger or with a small brush for a smoked finish.

Tips : For beginners, start by pressing your elbow on a table for a controlled trace.

To correct over close eyes, start with a light pencil from the inner corner to halfway and then finish with a dark pencil.

Heated on the hand, the pencil works more easily.

To correct a falling look start with the dark color then finish with the light color.

EYE LINER



*30% certified organic ingredients
99% natural ingredients*

QUESTIONS

EXPLANATION

COMMENT

PRODUCT ?

Seventies star product, glamorous accessory in the evening. The eyeliner is better on a naked eyelid or on a nude eye shadow.

The closer the eyeliner is to the lashline, the more natural and intense is the final look.

Its felt tip allows a very precise application. You can also make different thicknesses line.

For a perfect line, use a small mirror. Placement slightly below it allows to better visualize the eyelid.

EYE LINER TUTORIAL



Step 1 :

Draw the first line from the outer corner of the eye and direct your mine towards the tip of your eyebrow.

Step 2 :

Draw a line between the tip of the line already drawn and the middle of your eyebrow.

Step 3 :

Draw a line between the point in the middle of your eye lash and the inner corner of your eye.

Step 4 :

All you have to do now is fill the empty spaces to get a bambi look.

Tips : Apply your eye liner by placing an elbow on your table to avoid shaking and thus have a precise line.

VOLUME & GREEN PRECISION MASCARAS



Masacra volume & green :
5,5% certified organic ingredients
99,96% natural ingredients

Masacara précision
99% natural ingredients

QUESTIONS	EXPLANATION	COMMENT
PRODUCT ?	<p>BOHO GREEN MAKE-UP develops two mascaras: A very precise product (small format) to dress the look in everyday life, working all eyelashes. Natural finish = MASCARA PRECISION A volumizing product (large format) to lengthen the eyelashes and intensify the look = MASCARA VOLUME & GREEN</p>	<p>Volume & Green mascara is perfect for a very glamorous makeup.</p>
APPLICATION ?	<p>On well-cleaned eyelashes. Wipe your brush lightly to remove any excess material and avoid bundles. Lift the eyelid slightly and look down. You can start by applying the brush from the root of the eyelashes, to the end starting from the outside. Separate the eyelashes progressively. Once the mascara is dry, it becomes complicated to remove excess. For more volume, leave the brush motionless for a few seconds on the tip of the curled lashes. Start from the root to clad the straight eyelashes instead of stretching them outwards. Allow to dry and repeat once or twice for a maximized volume effect!</p>	<p>Tips : Close it well to avoid drying out. Pay attention to popular relief ! The eternal back and forth of the brush in the tube does not allow to take more product, in fact it only accelerates the drying of the mascara by entering air in the material tube. If you put mascara on your skin, remove it by rubbing gently with the brows comb of your eyebrow pencil.</p>

HOW TO USE MASCARA ?



Place your brush at the root of the eyelashes and reassemble in zig zag.
Same movement for lower lashes.



LIPS



LIPS PRODUCTS



Lips pencil

Ideal to define the lips before the lipstick application
Enriched with repair active
Non-oily texture
4 colors available



Lipstick

Comfort in use
Excellent performance
Protection and hydration of the lips *
17 colors available

* Superficial layers of the epidermis

LIPS PENCIL



10% certified organic ingredients
99% natural ingredients

QUESTIONS

EXPLANATION

COMMENT

PRODUCT ?

The BOHO GREEN MAKE-UP lip pencil plays more than a aesthetic role: It redraws the contours and prevents the lipstick from spinning and penetrating the fine lines around the lips, a highly unsightly effect.

APPLICATION ?

For lip contour, delineate the lipstick to prevent it from spinning. Do not make a single line but small hatching from the center of the lip and resume until the outer corner of lip. Same operations for lower and upper lip.

Hatching the pencil on all the lips before applying the lipstick to increase the product's hold.

(See tutorial p.46)

Tips : To correct drooping lips, apply a concealer tip to each commissure before applying the pencil by moving slightly up to the upper lip.

To correct lips too thin, a line of beige pencil with a clear lipstick and iridescent will be the most beautiful effect.

To correct thickest lips, apply a layer of foundation on the mouth, a pencil line inside the layout, a slight gradation of colors going to the corners of the lips. Avoid tones that are too dark.

LIPSTICK



From 43% to 81% certified organic ingredients
100% natural ingredients

QUESTIONS

EXPLANATION

COMMENT

WHICH COLOR ?

Find the shade that sublimates the natural color of your lips. If you want a darker shade, base yourself on the tones of your «perfect nude».

Light lips : Capucine/ Litchi/ Cassis/ Grenade/ Rose anglais/ Vanille fraise

Medium lips : Lin/ Tulipe/ Coquelicot/ Groseille/ Orchidée/ Vanille fraise/ Acajou

Dark lips : Lin/ Tapis rouge/ Bourgogne/ Figue/ Brique

Bicolour lips : Bourgogne/ Figue/ Grenat/ Tapis rouge/ Cassis

PRODUCT ?

A very worked lips make-up requires a lighter eye make up.
Small mouths should choose nude and clear shades.
The fleshy mouths are perfect with nude and dark shades.

Covering matte lipstick : 103 Groseille, 105 Tapis rouge, 106 Tulipe, 107 Lin, 108 Litchi

Covering pearly lipstick : 202 Acajou, 204 Orchidée

Glossy matt lipstick : 304 Capucine, 305 Grenat, 306 Bourgogne, 307 Coquelicot, 308 Brique, 309 Figue, 310 Grenade

Pearly lipstick : 402 Vanille fraise, 404 Rose anglais, 406 Cassis

APPLICATION ?

Do not forget to pat your lips with a tissue to remove excess moisturizing balm, applied beforehand to moisturize your lips.
Apply your lipstick directly to your lips starting at the upper lip, starting from the center to the ends.
Fill your lower lip, starting with a corner and joining the other end.
You can also apply your lipstick with a thin lip brush, for more precision. The brush is recommended to apply dark and intense shades.

Tips : SOS chapped lips ? Use a soft toothbrush to remove dead skin.

To nourish the lips, apply a mixture of honey and red sugar. Leave it act and massage gently, then rinse. Your lips are nourished and sweet.

A true studio tips to accentuate the contrast and pulse the color : iron the mouth contours with a brush and a hint of concealer.

LIPSTICK TUTORIAL



Step 1 :

Lightly exfoliate the lips with honey and sugar by small circular movements that will remove the small dead skins. Then rinse.

Step 2 :

Draw the lips contour with a pencil, same color as your lipstick.

Step 3 :

Fill the lip set to make a base and guarantee a long lasting hold to the lipstick.

Step 4 :

Apply the lipstick with a brush on all the lips for more precision, or directly with the tube.



NAILS



NAIL POLISH



From 69% to 85,2% natural ingredients



Our nail polishes are ecological and natural, without sacrificing neither the last, the color or the brightness.

PEFC[®] certified wood cap.

They are formulated with natural bio-sourced raw materials from cotton, potatoes, corn, cassava and wheat.

Formula enriched with silica, active used as natural nail strenghtener.



Application

Start by applying a layer of BASE to protect your nails and fix your nail polish, then let it dry. Two layers of the nail polish of your choice, taking care to dry it between each application. Finish by applying a layer of TOP COAT to bring shine to your nails and to make your manicure last.

Tips

To play with final look, apply nail polish N° 12 GYPSY FINISH for a subtly glittery nail polish. Guaranteed effect!

Are your nails tired, soft? Apply hardening nail polish n°09 to reinforce them!

NAILART TUTORIAL



Step 1 :

Apply a coat of BASE (n°10).

This step is very important as it helps to protect your nails and make the manicure long lasting.

Step 2 :

Apply a first coat of the nail polish color chosen (here is the n°24 PLUME) and then a second one.

Allow to dry well between coats of nail polish.

Step 3 :

Using a piece of Scotch tape, delineate a first half of the nail, then apply n° 58 SOLAR GOLD. Let it dry. Then, delimit the second part of the nail using a piece of scotch, then apply N°32 BOHO GREY. Again let it dry.

Step 4 :

Apply one coat of TOP COAT for optimum shine and hold (n°11).

Let it dry.

BOHO GREEN MAKE-UP



- ✧ BOHO GREEN MAKE-UP, a brand that combines beauty and naturalness
- ✧ BOHO GREEN MAKE-UP, a battle in favor of conscious cosmetics
- ✧ BOHO GREEN MAKE-UP, An ultra-colored and pigmented brand
- ✧ BOHO GREEN MAKE-UP, A constant ght for affordable prices
- ✧ BOHO GREEN MAKE-UP, a commitment to environmental causes and sustainable development
- ✧ BOHO GREEN MAKE-UP, a social engagement

LOOKS INSPIRATION

Nude make up



Products :

Eye shadows 288 Cachemire / 287 Laine / 286 Ombre
Eye pencil 01 Noir
Mascara Volume & Green
Blush 04 Rosé
Lipstick 106 Tulipe



Colorfull make up



Products :

Eye shadows 104 Café / 287 Laine / 213 Nuit / 212 Christelle / 204 Moka
Eye pencil 01 Noir
Mascara Volume & Green
Blush 04 Rosé
Lipstick 404 Rose Anglais



bohogreenmakeup



@BohoGreenMakeUp



Boho Green Make-Up



Boho Green Make-Up
9 rue Chavanne
69001 Lyon

Technical contact
make up & products
JUSTINE GONNET
0033 4 81 65 54 41